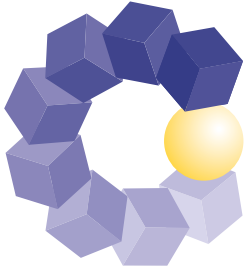


**COMPAMED**



Düsseldorf, Germany **14–17 November 2022**

---

Member of  **MEDICAlliance**

# High-tech solutions for medical technology

[www.compamed-tradefair.com](http://www.compamed-tradefair.com)



Messe  
Düsseldorf



With expectations clearly exceeded, the mood in the exhibition halls was upbeat.

**46,000**

visitors from  
150 countries

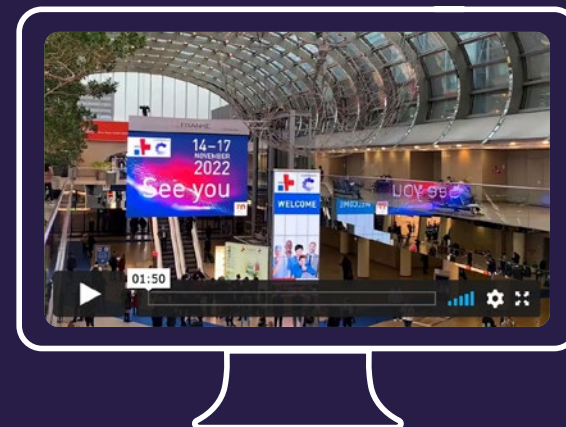
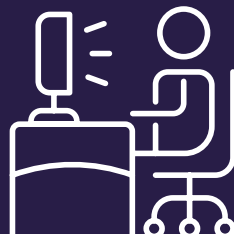


**3,523**

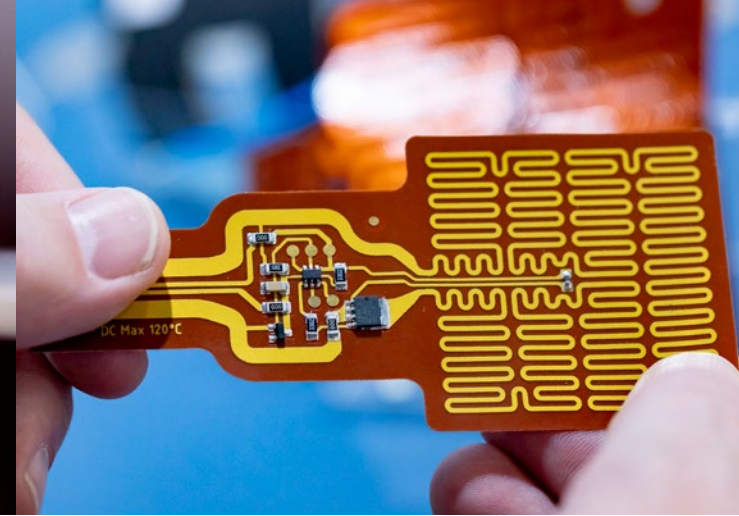
exhibitors from  
70 countries



**77,300** Unique  
users



The colours of  
MEDICA 2021 and  
COMPAMED 2021



# High-tech up close

Take advantage of the combination of the world's leading trade fair for medicine and the leading medical technology supplier industry event. With everything from A to Z on site, you will have the entire process chain at your fingertips.

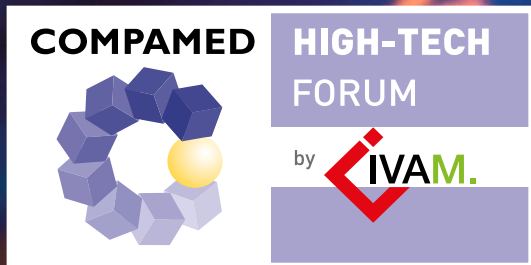
Intensive dialogue, needs meet solutions, ideas meet investors – COMPAMED 2022 offers you direct access to the target group at the world's largest meeting point for medicine.

## Components at a glance:

- Manufacturing of components
- Manufacturing of finished products
- Services
- Manufacturing equipment
- Components, modules, OEM equipment
- Electrical components, electronical components
- Microtechnology
- Raw materials, materials, adhesives
- Software, IT



# Concentrated expertise



The latest materials and production technologies such as 3D printing, nano-technologies, and microsystems technology are just some of the items leading experts will present here. What is more, the latest material and process solutions are all on display at the IVAM Product Market

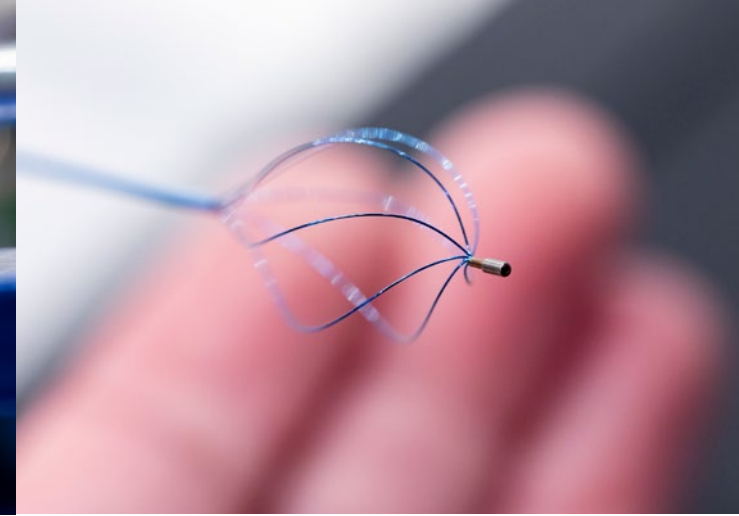
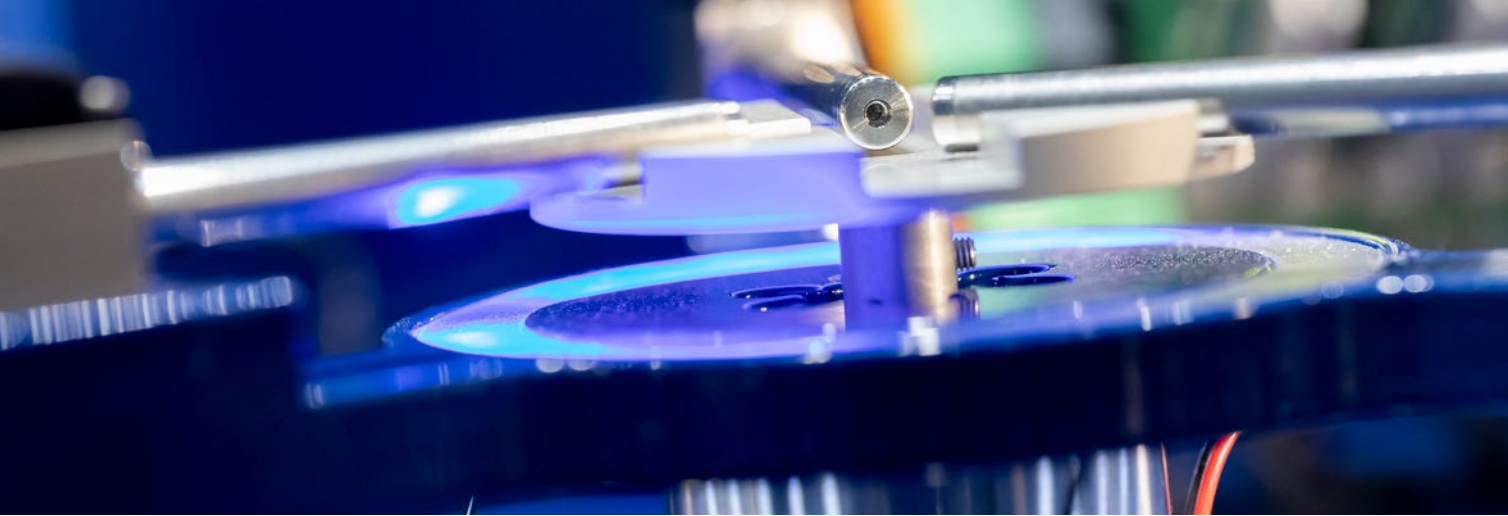
[www.compamed.de/CHF2](http://www.compamed.de/CHF2)



A practical presentation of the latest developments throughout the process chain. Expert talks focus on mechanical and electronic components and on innovative materials, manufacturing processes, manufacturing services of all kinds, design and usability aspects as well as quality assurance.

[www.compamed.de/CSF2](http://www.compamed.de/CSF2)

All information on the 7 forums, 3 conferences and 2 special shows can be found here:  
[www.medica.de/fc](http://www.medica.de/fc)



# Meeting point for manufacturers and suppliers



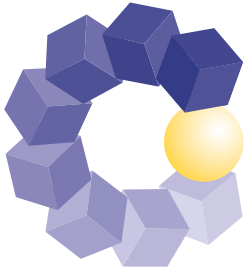
Find out more now, join in and register as an exhibitor by 15 April 2022 – simply visit: [www.compamed.de/2330](http://www.compamed.de/2330)

Exhibitor prices at a glance:

Row stand (1 side open)	€253.00/m <sup>2</sup>
Corner stand (2 sides open)	€263.00/m <sup>2</sup>
Front stand (3 sides open)	€267.00/m <sup>2</sup>
Block stand (4 sides open)	€276.00/m <sup>2</sup>

Christian Bigge, Senior Project Manager  
Fon +49 211 4560-573  
[BiggeC@messe-duesseldorf.de](mailto:BiggeC@messe-duesseldorf.de)

**COMPAMED**



High-tech solutions for medical technology

Düsseldorf, Germany **14–17 November 2022**

Member of  **MEDICAlliance**

A full range of services

Visitor service: [www.compamed.de/2100](http://www.compamed.de/2100)

Exhibitor service: [www.compamed.de/2300](http://www.compamed.de/2300)

Make valuable contacts using our matchmaking service

[www.compamed.de/matchmaking2](http://www.compamed.de/matchmaking2)

Arrival & accommodations

[www.compamed.de/contact\\_arrival\\_hotels](http://www.compamed.de/contact_arrival_hotels)

**COMPAMED 2022 – be a part of it!**

Messe Düsseldorf GmbH  
Postfach 10 10 06 \_ 40001 Düsseldorf \_ Germany  
Tel. +49 211 4560-01 \_ Fax +49 211 4560-668  
[www.messe-duesseldorf.de](http://www.messe-duesseldorf.de)



Messe  
Düsseldorf