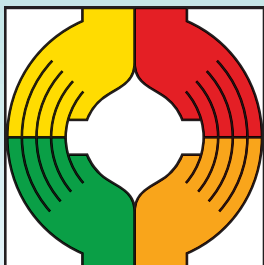


Information for visitors
with professional interests



REHACARE[®]
INTERNATIONAL

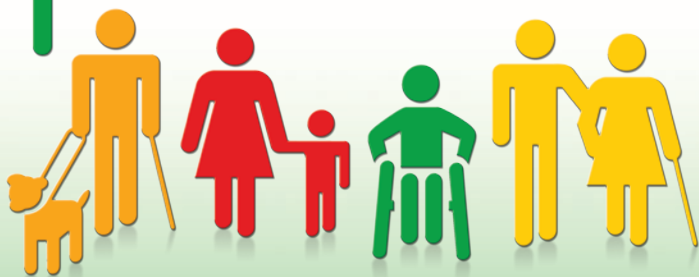


Trade Fair and Congress

Düsseldorf,
28 Sept. – 01 Oct. 2016

www.rehacare.de

Self-determined living



Messe
Düsseldorf



Sound information for experts

Do you work with care, rehabilitation or inclusion? REHACARE 2016 provides experts and trade visitors with first class information! The all-encompassing theme: The wide range of sectors that support a self-determined living for people with disabilities, chronic illnesses or for those who are in need of care.

At REHACARE, more than 850 national and international exhibitors are present to show innovations and further developments regarding rehabilitation and care. A great number of the attending companies allow a glimpse into the future and thus make use of REHACARE as a presentation platform for future-oriented product concepts. In these surroundings, you as a trade visitor will meet experts, who have dedicated themselves to this versatile industry for a self-determined living. Get to know innovative solutions for almost every area of life and every disability.



Forums, theme parks, lectures, seminars – a comprehensive programme

REHACARE Forum: Lectures on the provision of aids by the statutory health insurances, rehabilitation for the elderly and future-oriented projects.

Living with care @home: The focal point of the lectures and seminars is care at home – on the first day in form of certified events from the Initiative Chronic Wounds.

REHACARE Congress: The exchange of experience between specialists, who are involved in quarter development, leads to impulses for further constructive development of this future topic. Entry with separate admission ticket.

→ For more information go to: www.rehacare.de/congress





Market Place Brain: Information on counselling centres, aids, rehabilitation, care facilities for people with brain injuries and brain damages.

Theme Park People with disabilities at work: Exhibitors offer counselling services for people with disabilities in the working world.

rehaKind: New special show with lectures on the topic of aids for children and inclusion at school.

Sports Center: Hands-on activities and information on the various possibilities to stay active and fit with a disability and at an older age.

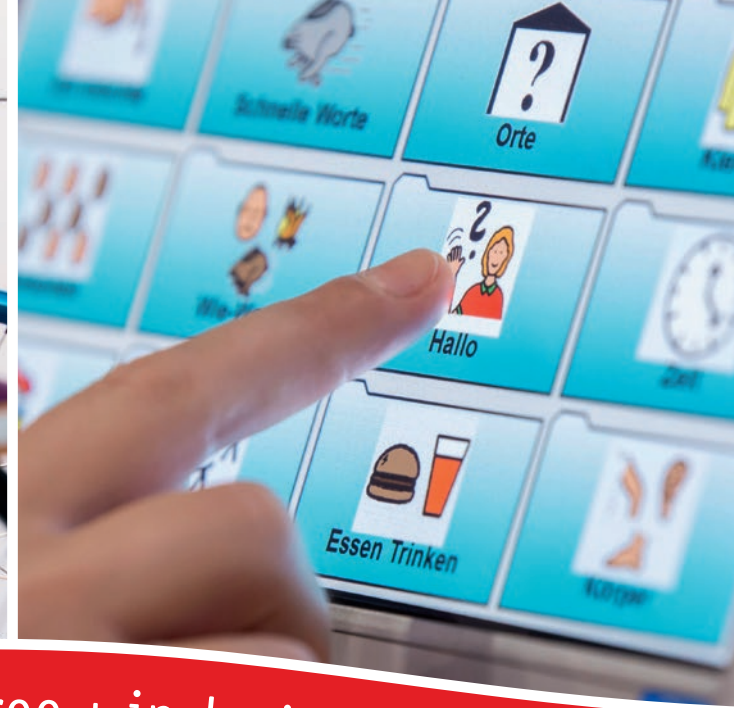
Exhibitor lectures: Companies introduce innovative products in detail and provide further information.

Kid's World: Integrative childcare provides professional supervision of small children, so that the trade visitors can concentrate themselves on their trade fair visit.

You will find the complete overview of the theme parks, forums and lectures at:

→ www.rehacare.de/special_forums





integrative + diverse + attractive + innovative + barrier-free + inclusive + representative + promising + accompanying
+ diverse + consulting + lively + informative + sporty + helpful + preventive + supportive + individual +



Barrier-free fairground:

Wheelchair rental: North and South Entrances

Guidance systems for the blind: North Entrance to Hall 5

Ground-level gastronomy: Halls 3, 4, 5, 6 and 7a

Rest room: Hall 4

Barrier-free toilets: In all halls, CCD Süd (South), North Entrance, outdoor area in front of Hall 5, 7a and between Hall 3 and 4

Changing room: Hall 4

Hall 3 REHACARE Forum
Living with care @home
Orthopaedics, Mobility aids, Wheelchairs, Wheelchair accessories
Aids for Daily Living
Sport, Games, Leisure, Barrier free living
Ergotherapy and Physiotherapy

Hall 4 Kid's World – Integrative childcare
Aids for children

Hall 5 Joint Area for the Blind and Visually Impaired
Aids for deaf and hearing impaired people
Electronic aids and communication
Mobility and Travel

Hall 6 Car Adaption and Manufacturers
Orthopaedics, Mobility Aids, Wheelchairs, Wheelchairs accessories

Hall 7a Sports Center

Hall 7.0 Art in Studio

CCD Süd REHACARE Congress



You will find the complete range on offer at:

→ www.rehacare.de/sitemap

At a glance

Opening hours:

28 – 30 September: 10 am – 6 pm

01 October 2016: 10 am – 5 pm

Prices:

Online day ticket: eTicket  8 € (incl. VRR)

→ www.rehacare.de/2130

Day ticket: 14 € (incl. VRR)

Reduced-price day ticket*: 8 € (incl. VRR)

* People with a disability, students, pupils, trainees, pensioners, people currently serving voluntary military service or federal voluntary service and unemployed people. Persons who accompany people with a disability (classification "B and/or H") will gain free admission!

All entrance tickets and eTickets are also valid for free travel to and from the exhibition grounds on the day of the trade fair visit using all VRR transport, price category D (DB/German Railway 2nd class, supplement-free trains only).

Arrival:

Travel comfortably and barrier-free to REHACARE.

→ www.rehacare.de/arrival

Please also take advantage of the barrier-free hotel offers and sightseeing tours in Düsseldorf.

→ www.duesseldorf-tourismus.de/en/tradefair/rehacare



[www.twitter.com/
REHACARE](http://www.twitter.com/REHACARE)



[www.youtube.com/
REHACARETradeFair](http://www.youtube.com/REHACARETradeFair)



[www.facebook.com/
REHACARE](http://www.facebook.com/REHACARE)

Always up-to-date: → www.rehacare.de

Messe Düsseldorf GmbH
P.O. Box 10 10 06 _ 40001 Düsseldorf _ Germany
Tel. + 49(0)211/ 45 60-01 _ Fax + 49(0)211/ 45 60-6 68
www.messe-duesseldorf.de

Basis for
Business

